

The Caversham
mk2

House & Land
Lot 921 Duncombe Ave Officer



Inclusions List:

- Choice of Modern Facades
- Panel Lift Garage Door
- Feature Entry Door
- 2750 Ceiling Height
- Cement Roof Tiles
- Laminate Kitchen
- 20m stone bench top
- Glass Splashback
- 900mm EURO S/Steel Appliances
- Extensive Floor Tiling or Timber Laminate Flooring
- Quality Carpet to all remaining areas
- Laminate Vanities
- Ceramic Basins
- Chrome Flickmixer Tapware
- Semi Frameless Shower Screens
- Choice of Baths
- Aluminium Windows with locks
- Select Stacker Door to outdoor area
- Flyscreens to all opening windows
- Gas Ducted Heating
- Solar Hot Water with Rinnai instantaneous back up system
- 67 x 18 Skirting & Architraves
- Flush Panel Doors
- Chrome Lever Door Furniture
- Vinyl Finish Sliders to all Robes
- Recycled Water
- Fibre to the Home (NBN Package)
- Fencing Allowance
- Driveway Allowance
- Generous Site Allowance
- 7 Year Structural Guarantee

H&L Package Price: **\$604,900**

Contact Rachel Vanderzee 0429021531

WWW.SJDHOMES.COM.AU

DESIGNED FOR YOUR NEEDS

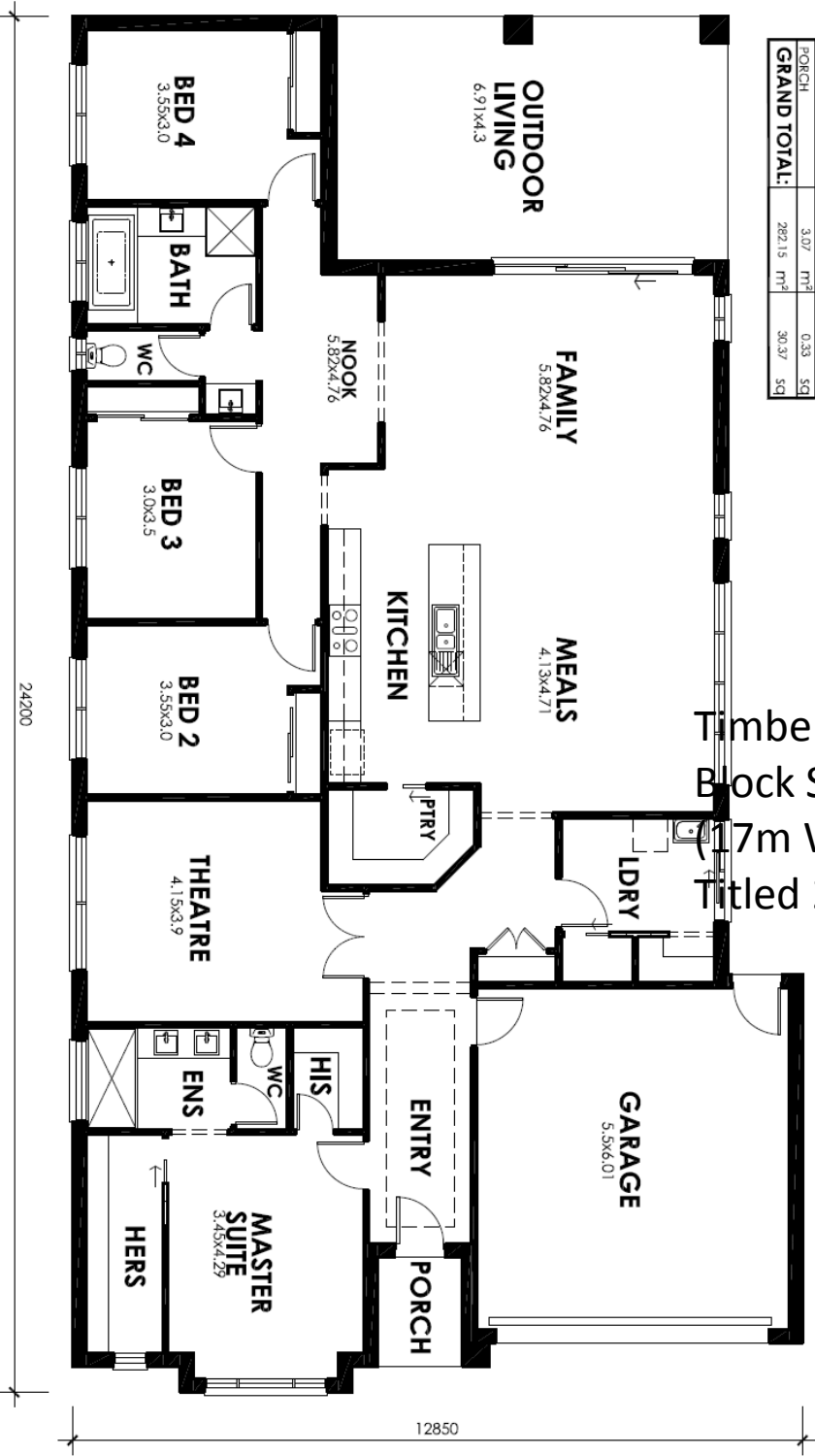
SJD
homes

GUARANTEED
BEST
PRICE

Like us



AREAS TABLE				
GROUND FLOOR	212.88	m ²	22.91	sq
FIRST FLOOR	0.00	m ²	0.00	sq
SUB TOTAL:	212.88	m ²	22.91	sq
GARAGE	36.49	m ²	3.93	sq
OUTDOOR LIVING	29.71	m ²	3.20	sq
PORCH	3.07	m ²	0.33	sq
GRAND TOTAL:	282.15	m ²	30.37	sq



Timber top
 Block Size: 595m2
 (17m Wide x 35M Long)
 Titled 2016

CAVERSHAM MK2 RH