




# CHEVIOT HOMES

## CLOVELLY 266B

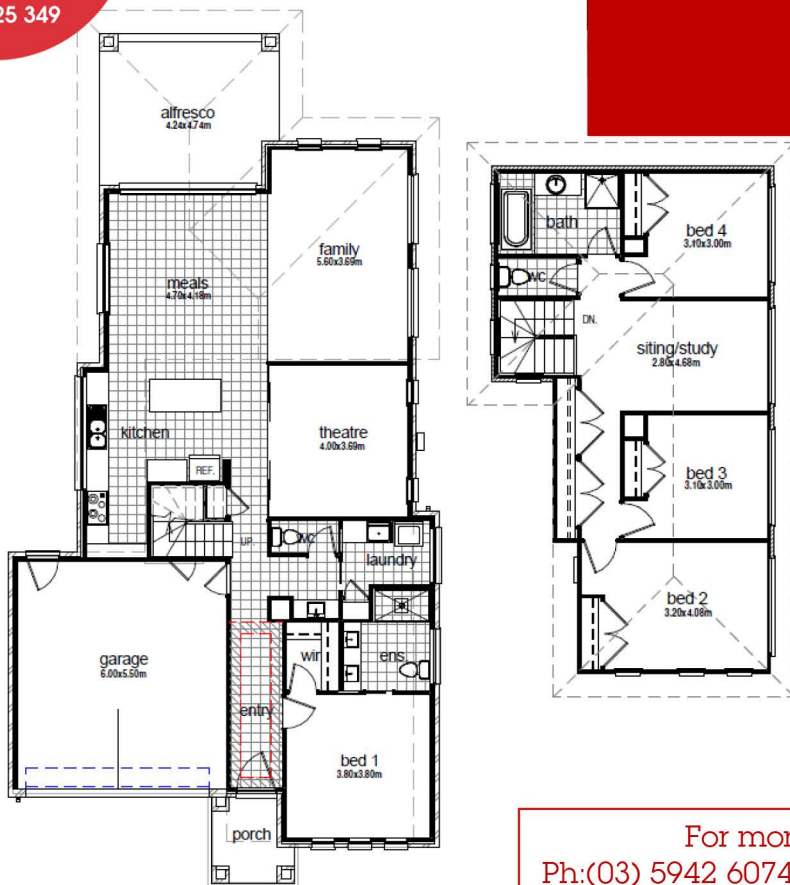
Lot 921 Goldsborough Drive, Officer  
Timbertop Estate

4  2  2 



House & Land Package  
**\$645,332**

Block size: 595m<sup>2</sup>  
Dwelling size: 29sq



### INCLUSIONS

- 6 Star Energy Rating
- Tiled Roof Covering
- Under roofline Alfresco area
- Coloured Concrete Driveway
- Face brickwork & matrix panelling feature Front Façade
- Floorcoverings
- Sectional Panel Lift Garage Door with Remote
- 900mm Stainless Steel Appliances

\*Conditions pending site costs

Timbertop  
OFFICER

For more information contact us  
Ph:(03) 5942 6074 E: admin@cheviothomes.com.au  
Display Home Address: 3 Clovelly Way, Officer  
Head office: (03) 5941 4944  
www.cheviothomes.com.au

DISCLAIMER: Cheviot Homes Pty Ltd reserves the right to alter inclusions as part of ongoing product development without written notice. Government building guide lines may apply. Site specific building controls and or conditions may vary standard inclusions to satisfy foundation designs, 6 star energy requirements and BAL ratings. All package pricing is dependent upon current land availability.