

# The Caversham mk2

# House & Land

Lot 921 Duncombe Ave Officer



### ***Inclusions List:***

- Choice of Modern Facades
- Panel Lift Garage Door
- Feature Entry Door
- 2590 Ceiling Height
- Cement Roof Tiles
- Laminate Kitchen
- Glass Splashback
- 900mm EURO S/Steel Appliances
- Extensive Floor Tiling or Timber Laminate Flooring
- Quality Carpet to all remaining areas
- Laminate Vanities
- Ceramic Basins
- Chrome Flickmixer Tapware
- Semi Frameless Shower Screens
- Choice of Baths
- Aluminium Windows with locks
- Select Stacker Door to outdoor area
- Flyscreens to all opening windows
- Gas Ducted Heating
- Solar Hot Water with Rinnai instantaneous back up system
- 67 x 18 Skirting & Architraves
- Flush Panel Doors
- Chrome Lever Door Furniture
- Vinyl Finish Sliders to all Robes
- Recycled Water
- Fibre to the Home (NBN Package)
- Fencing Allowance
- Driveway Allowance
- Generous Site Allowance
- 7 Year Structural Guarantee

H&L Package Price: **\$592,300**

Contact Rachel Vanderzee 0429021531

[WWW.SJDHOMES.COM.AU](http://WWW.SJDHOMES.COM.AU)

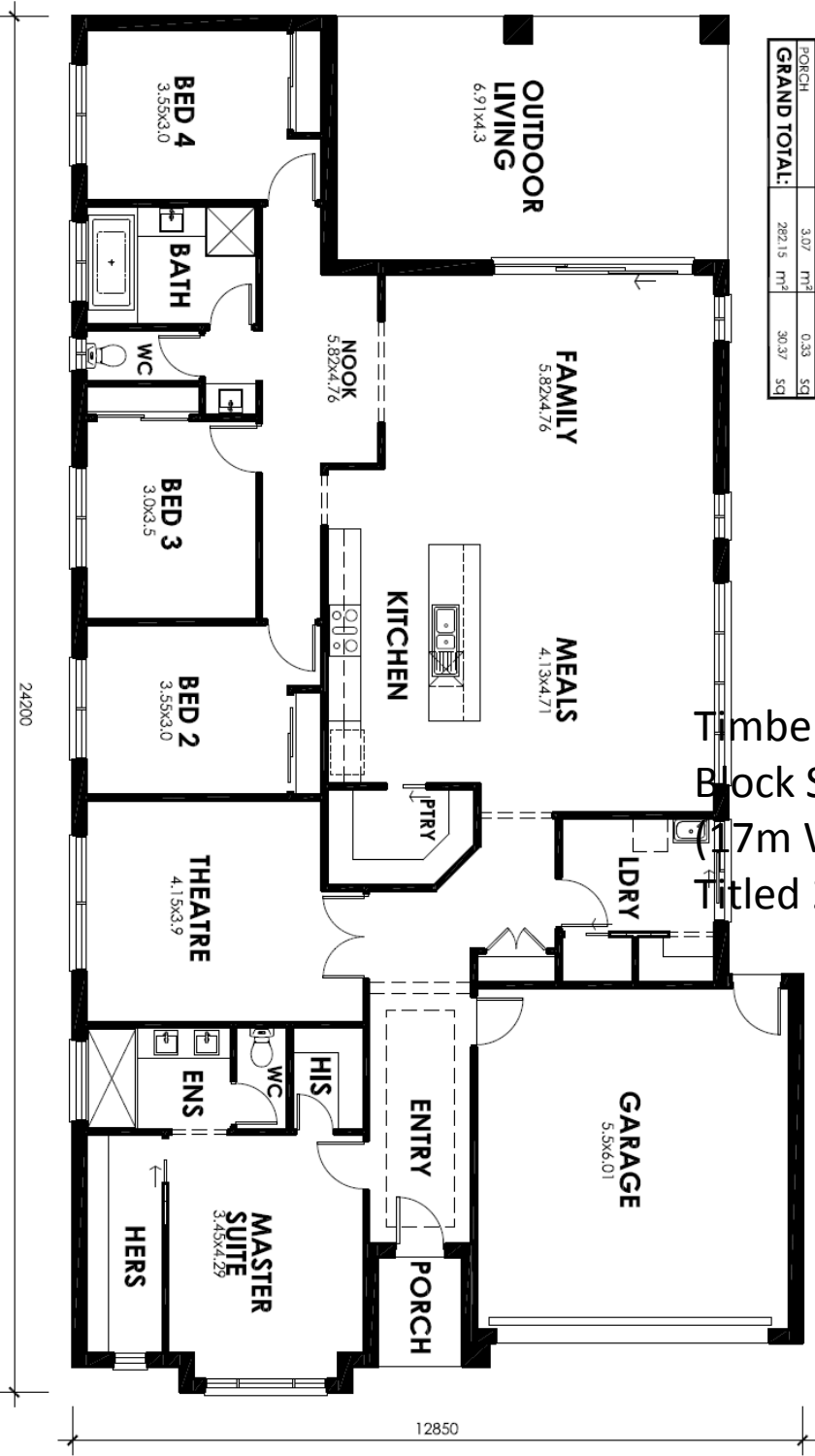
DESIGNED FOR YOUR NEEDS



Like us



AREAS TABLE				
GROUND FLOOR	212.88	m <sup>2</sup>	22.91	sq
FIRST FLOOR	0.00	m <sup>2</sup>	0.00	sq
<b>SUB TOTAL:</b>	212.88	m <sup>2</sup>	22.91	sq
GARAGE	36.49	m <sup>2</sup>	3.93	sq
OUTDOOR LIVING	29.71	m <sup>2</sup>	3.20	sq
PORCH	3.07	m <sup>2</sup>	0.33	sq
<b>GRAND TOTAL:</b>	282.15	m <sup>2</sup>	30.37	sq



# CAVERSHAM MK2 RH

Timber top  
 Block Size: 595m<sup>2</sup>  
 17m Wide x 35M Long)  
 Titled 2016