

House & Land Package

The JAMIESON 248



Optional Facade Shown



WIDTH 15.16M LENGTH 19.61M

SQUARE METERS 247.78

(Land: 665 SQM)

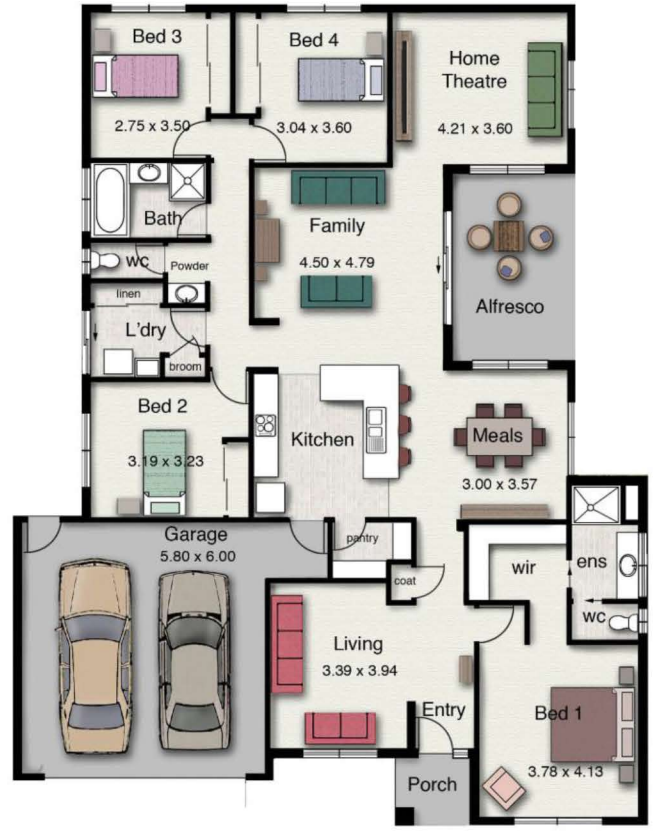
Lot 807 Axnick Rise Timbertop Estate, Officer.

\$608,000*

Features

- **This Design Can Be Modified For A Split Level On A Sloping Block!**
- Site Cost Allowance
- Façade Included
- 30 M/L Driveway Allowance
- Front Landscaping Allowance
- LED Downlights to Main Livings & Bedrooms
- Timber Laminate Flooring, Carpet to Bedrooms & Robes
- Panel Lift Garage Door w/ 3 Remotes
- 20ml Stone Bench Tops to Kitchen
- 900mm Omega Kitchen Appliance Pack
- Tiled Shower Bases
- Alfresco Over Roofline

Jo Brooks: 0412 991 628
jo@cardiniahomes.com.au
Display: 47 Grandvue Blvd Pakenham



Builders License: DBU-29206

*Dimensions, photographs and sketches are approximate and for illustrative purposes only. They may also include optional features or items that are not supplied by Hotondo Homes. ©Hotondo Pty Ltd all rights reserved. Check with your local builder for standard inclusions. Hotondo Homes reserves the right to change plans, specifications, materials and suppliers without notice. See hotondo.com.au for further terms & conditions. ^ Subtract State Government FHO Grant for eligible first home buyers.

www.hotondo.com.au

